

## **Amphenol LTW Broadband Wireless Access Market**



# Broadband Wireless Access Focus

## X-Lok



Spec. Size	Pin #	Current Rating	Operating Temperature
Mini (A Size)	2P~8P	2A~12A	<b>Receptacle</b> -40°C~105°C
Standard (B Size)	2P~8P	5A~10A 10A+5A	<b>Overmolded Cable</b> Date -20°C~80°C Power -20°C~105°C Hybrid -40°C~105°C
Middle (C Size)	2P~12P	5A~20A 10A+5A	
Large (D Size)	2P~18P	5A~20A 20A+5A	<b>Field Installable</b> -40°C~105°C



IP 68



UL 1977

UL 2238+50e



## Power



Spec. Type	Pin #	Current Rating	Operating Temperature
PWE	5P~7P	8A	<b>Receptacle</b> -40°C~105°C
PWF	2P~4P	12A	
PWG	4P	16A	<b>Overmolded Cable</b> -20°C~80°C
PWC	3P	20A	
PWCU	4P~12P	20A+2A	<b>Field Installable</b> -40°C~105°C
PWH	3P~5P	25A	
PWL	3P	30A	



IP 67/68



UL 1977



## USB



Spec.	Transmission Speed	Current Rating	Operating Temperature
USB 2.0 (Type A / B)	Up To 480Mb/s	1.5A	<b>Receptacle</b> PA:-20°C~105°C M-PPE:-40°C~105°C ABS:-20°C~80°C
USB 3.0 (Type A)	Up To 5Gbps	1A	
Mini USB (Type B)	Up To 480Mb/s	1.5A	<b>Receptacle W/ Wires</b> PA:-20°C~105°C ABS:-20°C~80°C
Micro USB (Type AB)	Up To 480Mb/s	1A/1.8A	
USB 3.1 (Type C)	Up To 10Gbps	3A~5A	<b>Overmolded Cable</b> -20°C~80°C



IP 67/68



# Broadband Wireless Access Focus

## Ceres



Spec. Size	Pin #	Current Rating	Operating Temperature
Mini (A Size)	2P~6P	2A~5A	<b>Receptacle</b> -40°C~105°C  <b>Receptacle W/ Wires</b> -20°C~80°C  <b>Overmolded Cable</b> -20°C~80°C  <b>Field Installable</b> -40°C~105°C
Standard (B Size)	2P~12P	2A~10A 5A+2A 10A+5A	
Middle (C Size)	2P~18P	2A~20A 5A+2A 10A+5A 10A+2A	
Large (D Size)	2P~22P	2A~20A 20A+2A 20A+5A	
Macro (E Size)	31P	5A	
Others	2P~7P	5A~10A 10A+5A	



IP 66/67

UL 1977

## RJ 45



Spec.	Transmission Speed	POE	Operating Temperature
Cat. 5e	Up To 1Gbps	60W/2A	<b>Receptacle</b> -20°C~80°C  <b>Overmolded Cable</b> -20°C~80°C  <b>Field Installable</b> -40°C~105°C  <b>Coupler</b> -40°C~105°C
Cat. 6A	Up To 10Gbps	N/A	



IP 67

TIA/EIA-568  
(Transmission Rate)

## Vent



Spec. Series	Membrane	Material	Operating Temperature
M6x0.75	Hydrophobic Oleophobic	Thermoplastic	-40°C~125°C
M12x1.5		Metal Stainless Thermoplastic	
Snap-in		Thermoplastic	

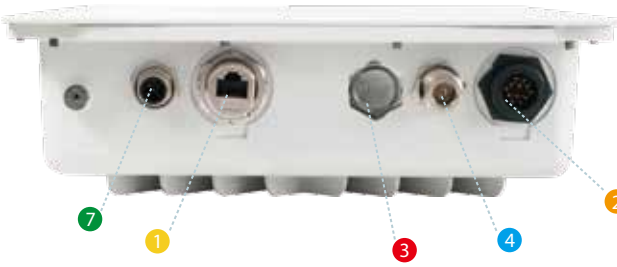


IP 68/69K

# Broadband Wireless Access Market

With the demand of Broadband Wireless Access (BWA) for 4G and LTE, core network infrastructure for the BWA deployment to market. Not only qualified product features for deployment of outdoor CPE and equipment become critical conditions to with

Applications	M Series	Ceres	X-Lok	HS-Lok	Power
General Small Cells	✓	✓	✓	✓	✓
RRH (Remote Radio Head)	✓	✓	✓	✓	✓
Wireless Mobile Backhaul	✓	✓	✓	✓	✓
High Capacity Mobile Subscriber Unit	✓	✓	✓	✓	✓
Outdoor Base Station Unit	✓	✓	✓	✓	✓
Outdoor LTE		✓	✓	✓	✓
Outdoor AP	✓	✓	✓	✓	✓
Subscriber Station		✓	✓	✓	✓
Outdoor Wireless Mesh Router	✓	✓	✓	✓	✓
Base Station power supply		✓	✓	✓	✓
Outdoor AP & Controller	✓	✓	✓	✓	✓



10 Outdoor Base Station Unit

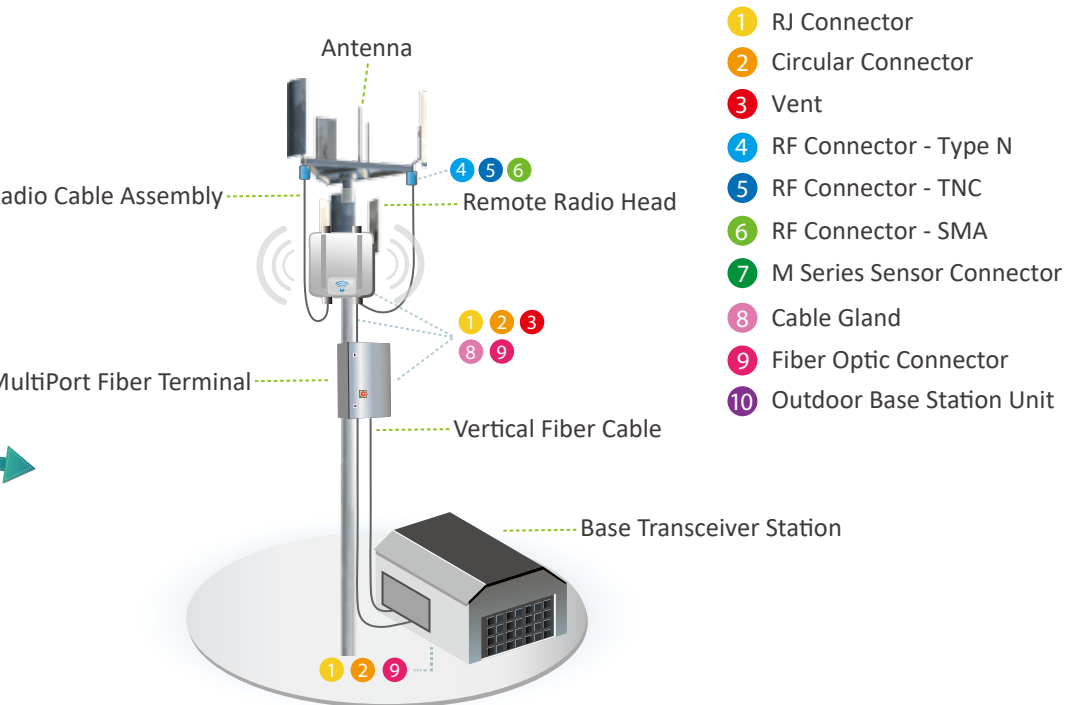


Remote R

M

ork, backhaul, base station has been updated to higher and sophisticated  
 ure with cost effective keep competitive but also easy and quick installment  
 stand the toughest outdoor environments and also keep advantage in BWA market.

USB	Fiber Optics	D-Sub	Cable Gland	RJ45	LED Indicator	Vent	RBL
✓	✓	✓	✓	✓	✓	✓	✓
✓	✓		✓	✓		✓	✓
✓	✓		✓	✓		✓	✓
✓	✓		✓	✓	✓	✓	✓
✓	✓		✓	✓	✓	✓	✓
			✓	✓	✓	✓	✓
✓	✓	✓	✓	✓		✓	✓
	✓		✓	✓	✓	✓	✓
✓	✓		✓	✓		✓	✓
			✓		✓	✓	✓
✓	✓		✓	✓		✓	✓



## DVI / HDMI / D-Sub

DVI



HDMI



D-Sub



Series	Spec.	Pin #	Current Rating	Operating Temperature
DVI		19P~29P	1.5A	Receptacle -20°C~80°C
HDMI		19P	0.5A	Overmolded Cable -20°C~80°C
D-Sub Standard		9P~50P	5A	Receptacle -40°C~105°C
D-Sub High Density		15P~78P	2A	Overmolded Cable -20°C~80°C Field Installable -40°C~105°C



IP 67/68



## Cable Gland / LED Indicator / RF / Fiber Optics

Cable Gland



Fiber Optics



LED Indicator



RF N Type



RF SMA Type



Series	Spec.	Operating Temperature
Cable Gland		-40°C~105°C
RF		
Fiber Optics		
LED Indicator		-40°C~80°C



IP 67/68



## M Series



Size	Spec.	Pin #	Current Rating	Operating Temperature
M8 / G8		2P~6P	1.5A~3A	<b>Receptacle</b> -40°C~105°C  <b>Overmolded Cable</b> PVC -20°C~80°C PUR -20°C~85°C  <b>Field Installable</b> -40°C~105°C
M10.5		2P~5P	2A	
M12 A Code		2P~12P	1.5A~4A	
M12 B Code		3P~5P	4A	
M12 D Code		3P~5P	4A	
M12 I Code		5P	4A	
M12 S & T Code		4P	12A	
M12 X Code		8P	0.5A	
M12 K & L Code		5P	12A(16A)	
M20		2P~14P	5A~20A	
M23		6P	28A	



IP 65/68/69K



UL 1977



IEC  
61076-2-101



A-Code B-Code D-Code I-Style K-Code L-Code M-Code S-Code T-Code X-Code Y-Code



● Upon Request

## HS-Lok



Type	Spec.	Pin #	Current Rating	Operating Temperature
Q8D		2P~6P	5A	-40°C~105°C
Q8U			2A	
Q8DU			5A+2A	



IP 68



UL 2238 + 50e



## RBL



Size	Spec.	Pin #	Current Rating	Operating Temperature
Middle (C Size)		2P~9P	5A~10A 10A+5A	<b>Receptacle W/ Wires</b> -40°C~105°C  <b>Overmolded Cable</b> Data -20°C~80°C Power -20°C~105°C Hybrid -40°C~105°C
Large (D Size)		2P~18P	5A~20A 20A+5A	<b>Field Installable</b> -40°C~105°C



IP 67/68



UL 1977



**For further information, please contact:**

**Luc Kan**

Email: [luc@ltw-tech.com](mailto:luc@ltw-tech.com)

Follow us on

**LinkedIn**



Find out more new products here



201901EN01