

Smart Transportation Solutions



AUTONOMOUS
DRIVING



COMPONENTS / CUSTOM
SOLUTIONS AND VALUE
ADDED SERVICE



BATTERY
MANAGEMENT
SYSTEMS

Amphenol
INDUSTRIAL PRODUCTS GROUP

Amphenol LTW[®]
Unrivaled InterConnects for Harsh Environments

Unrivaled InterConnects for Harsh



24+

Product Series

30+

Market
Applications

Environments



80,000+

Part Numbers
(>70% customized parts)

75+

Distribution Channels



Headquartered in New Taipei City, Taiwan with factories in Kunshan, Jiangsu Province, China PRC and Nogales, Mexico ALTW designs and manufactures uncompromising stringent quality interconnects.

Amphenol LTW

Since 1993, Amphenol LTW Technology “ALTW” lives and breathes to create, innovate, design and produce “*unrivalled interconnects for harsh environments*”. With over 300 worldwide patents, not only does ALTW offer the broadest and widest range of rugged interconnects in the industry but also customization with the mission of “Customer Satisfaction First”. Undoubtedly, ALTW is the leader in rugged interconnects, highly recognized for its uncompromising quality, short lead time, fast and tailored service and its very competitive pricing.

Regardless of the challenging environments that your products will be subject to; there is a very good chance that you will find what you are looking for with ALTW.

Our Capabilities

ALTW's strategy is to have as much vertically integrated manufacturing in-house capabilities as possible in order to ensure quality assurance, short lead time and highly competitive pricing.

These are for example:

- √ Testing Laboratories certified TAF and UL WDTP
- √ CNC lathe machined parts and contacts / pins
- √ Tooling / mold design and manufacturing
- √ Horizontal and vertical injection manufacturing
- √ Semi and full automated connector and cable assembly lines
- √ Cable assembly
- √ Total electronic turnkey solutions

Online Resource



amphenolltw.com

Your benefits

- √ Worldwide access 24/7
- √ Product configuration
- √ Real time order tracking
- √ Online assistance (live chat)
- √ Instant drawing release
- √ Instant quotation
- √ Order online
- √ Catalogue

Unrivalled Interconnects For Harsh Environments is

the ultimate goal that ALTW has devoted over 2 decades pursuing; striving for perfection in engineering, manufacturing & the product performance of our ruggedized interconnect solutions.

Driven by technology and through continuous innovation, ALTW are now confident we provide a very broad range of such interconnect. Designed specifically for extreme outdoor applications and through providing a custom tailored service we aim to provide complete customer satisfaction. ALTW are the ideal reliable partner to assist you in achieving your product dreams.



Easy to lock:



Tough:



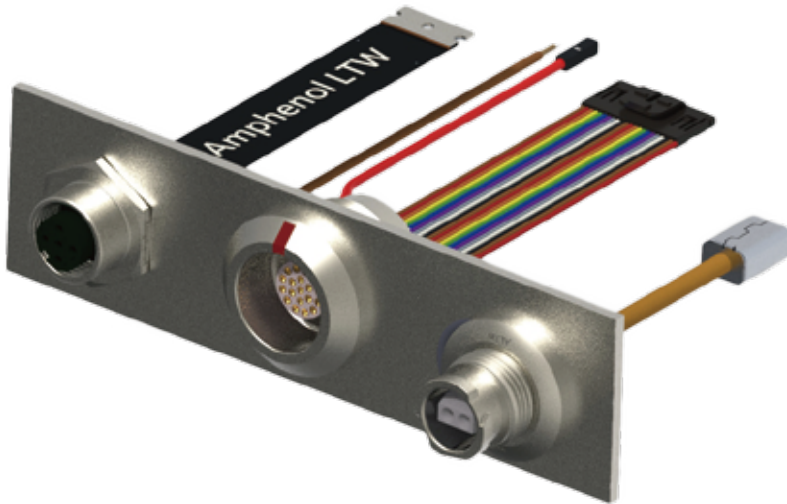
Shielded: 360° EMI and EMC protection



TREND OF PRODUCT

Quick lock mechanism for fast 、 easy 、 secure installation

Withstands extreme/harsh environments



 **Smaller:** Toward miniaturization

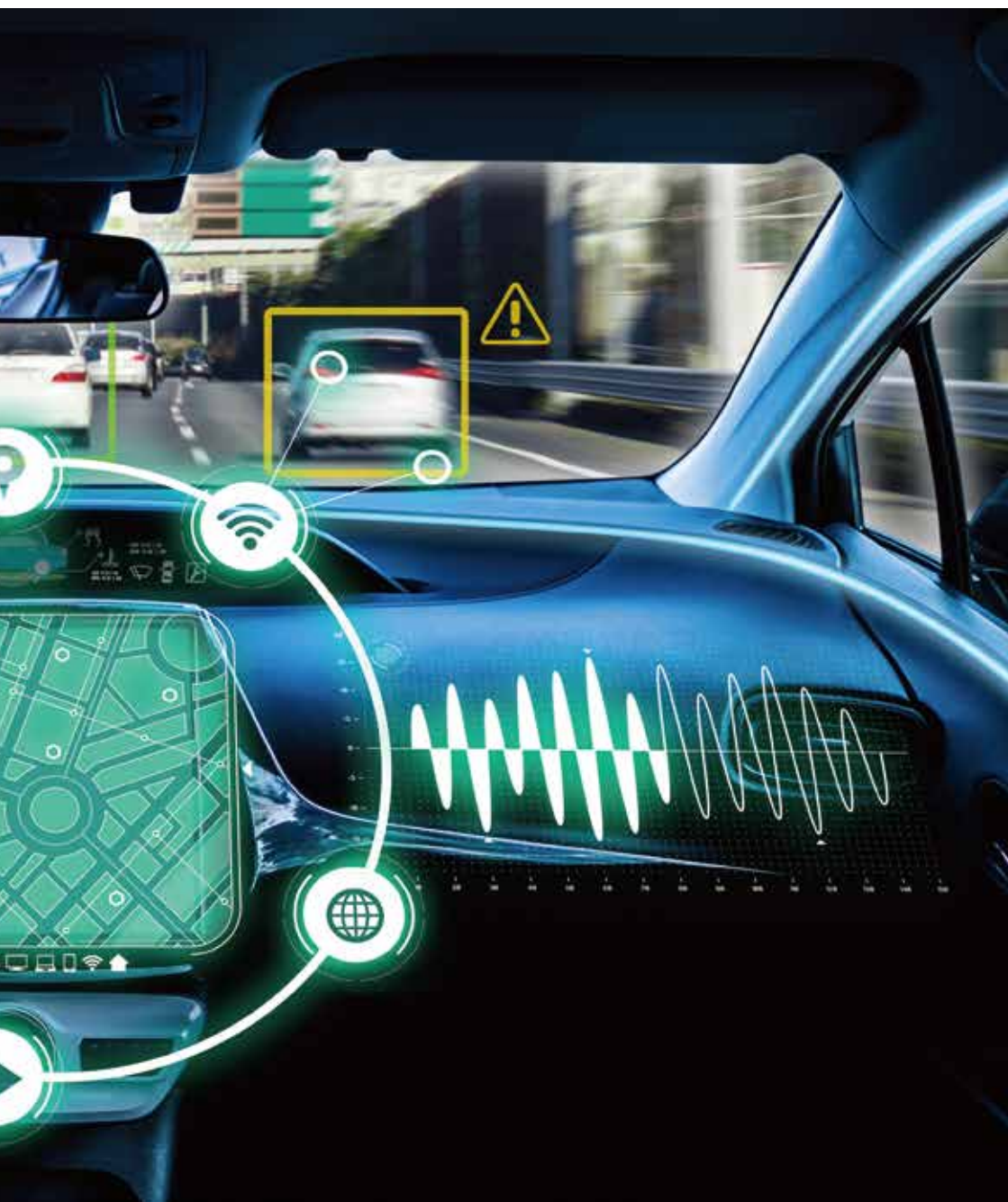
 **Faster:** Higher speed, quick/easy installation and build

T DEVELOPMENT

Amphenol LTW[®]
Unrivaled InterConnects for Harsh Environments

Autonomous Driving





Applications

BCM

Body Control Module

ADAS

Advance Driver-Assistance Systems

VO

Vehicle C



①

Control System

②

Camera

③

Lidar Sensor

④

Battery Pack

⑤

AI Computer System

⑥

Lighting and Signal

⑦

Data Acquisition

⑧

ECU Box

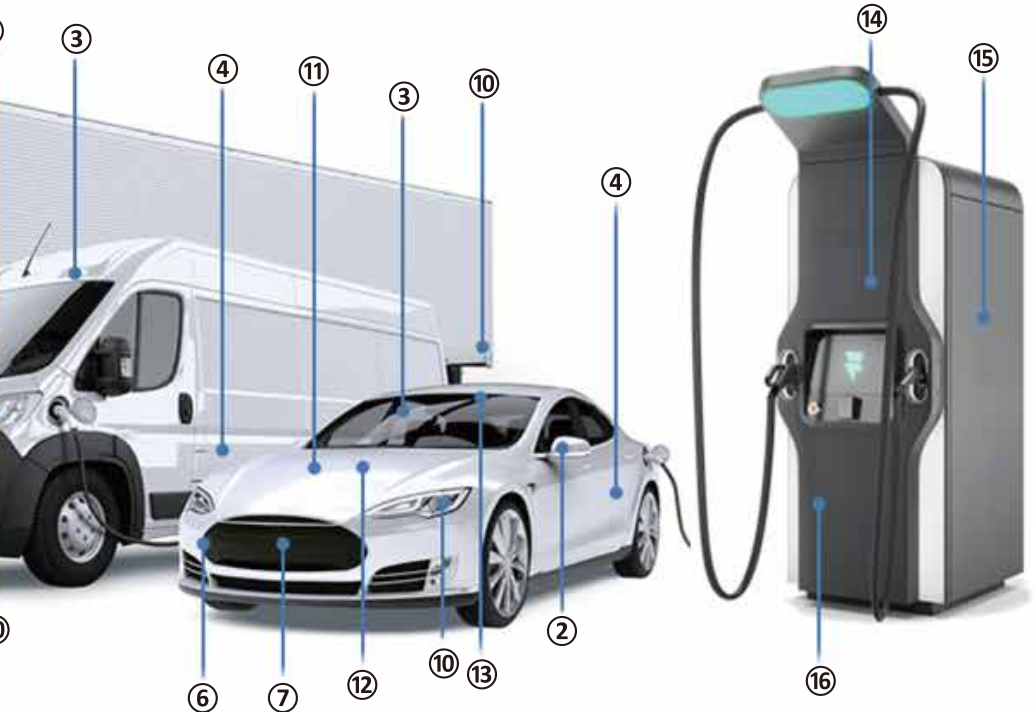
CU

Control Unit

IVI

In-Vehicle Infotainment

CHARGING STATION



⑤
Tracking System

⑥
Radar

⑦
ADAS System

⑧
Charger

⑬
GPS System

⑭
Battery Interconnect

⑮
Fan/Pump Module

⑯
Fluid/Temp Sensor

Products

The M5 to M12 circular product range available from ALTW provides a comprehensive and expansive range of options for signal, data and power interconnect for your devices.

The wide selection of designs enables comprehensive connection solutions for the integration systems of both autonomous and electric vehicles; for example advanced driver-assistance systems including lidar, radar, camera and GPS applications.

ALTW is also offering value added services such as cable assembly, custom solutions and new product development (ODM/JDM).



Scan and find
more features

M Series

- Switches
- Lighting System
- Actuators
- Lidar Sensor
- GPS System



M10.5



M20



M23



● With LED Indicator



Ceres

- Control Box
- Tracking System
- Battery Interconnect PCB
- Signal Lighting



Power

- Hybrid Transmission
- Cabin Chassis Interface
- Inverter
- Control System



X-Lok

- Remote Monitoring System
- Lidar Sensor
- Radar
- Display
- Signal Lighting



FLOS & FLOS+

- Control Box
- Data Acquisition System
- GPS System
- Lidar Sensor
- Battery Pack



RJ

- Telematics Control Unit
- Charger
- Display
- GPS System



USB

- Telematics Control Unit
- Charger
- Display
- GPS System



HS-Lok

- Signal Lighting
- Control System
- Control Panel
- Cabin Accessory
- Infotainment System



MPronto-12

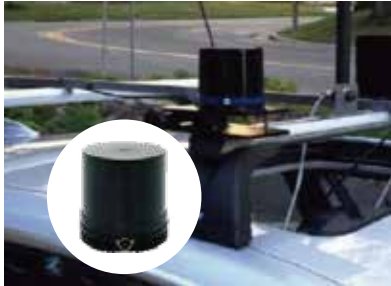
- Signal Lighting
- Control Box
- Lidar Sensor
- Lighting System
- Control Panel



ZConnect[®]

- Lighting System
- Sensor System
- Infotainment System
- Battery Pack
- Steering Column Switch

Success Stories



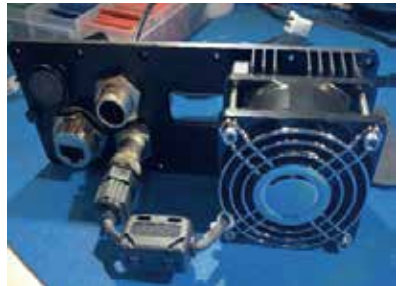
RJ, M12, M19



Ceres, USB 3.1



M12 X Code, M12 Hybrid



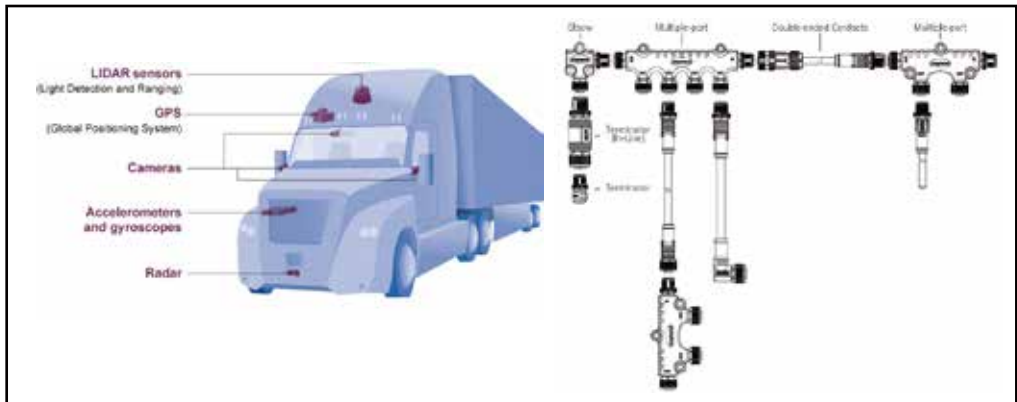
RJ, M12 S Code



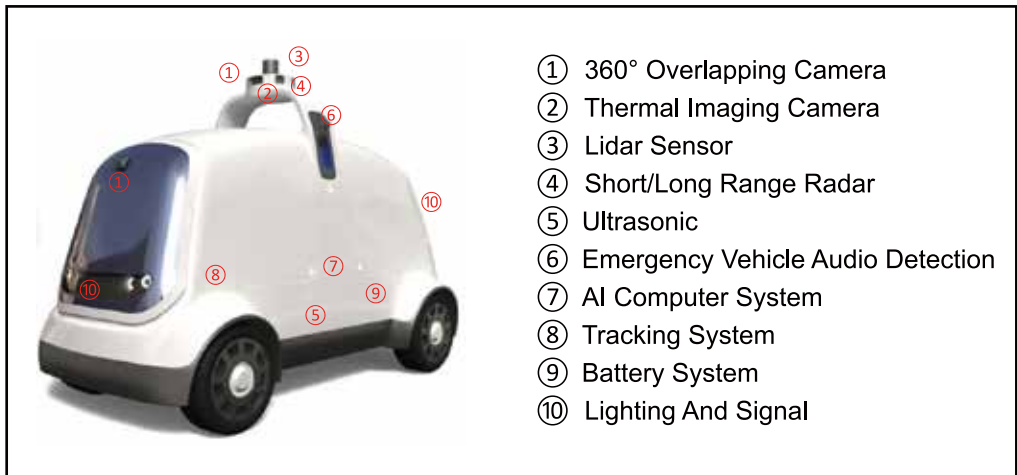
FLOS & FLOS+



FLOS & FLOS+



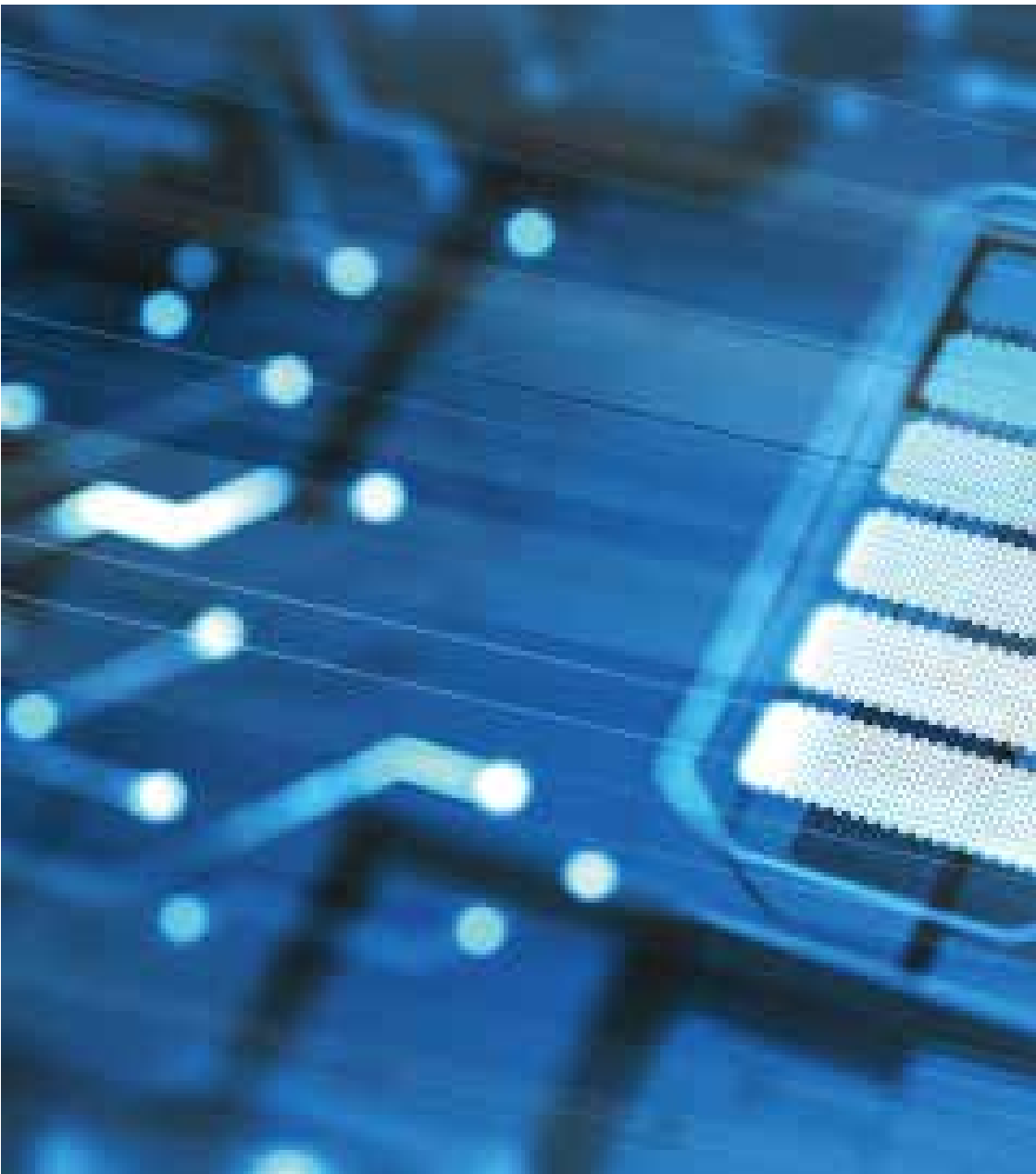
M series, MPronto-12, USB, HS-Lok, RJ



M series, MPronto-12, USB, HS-Lok, RJ

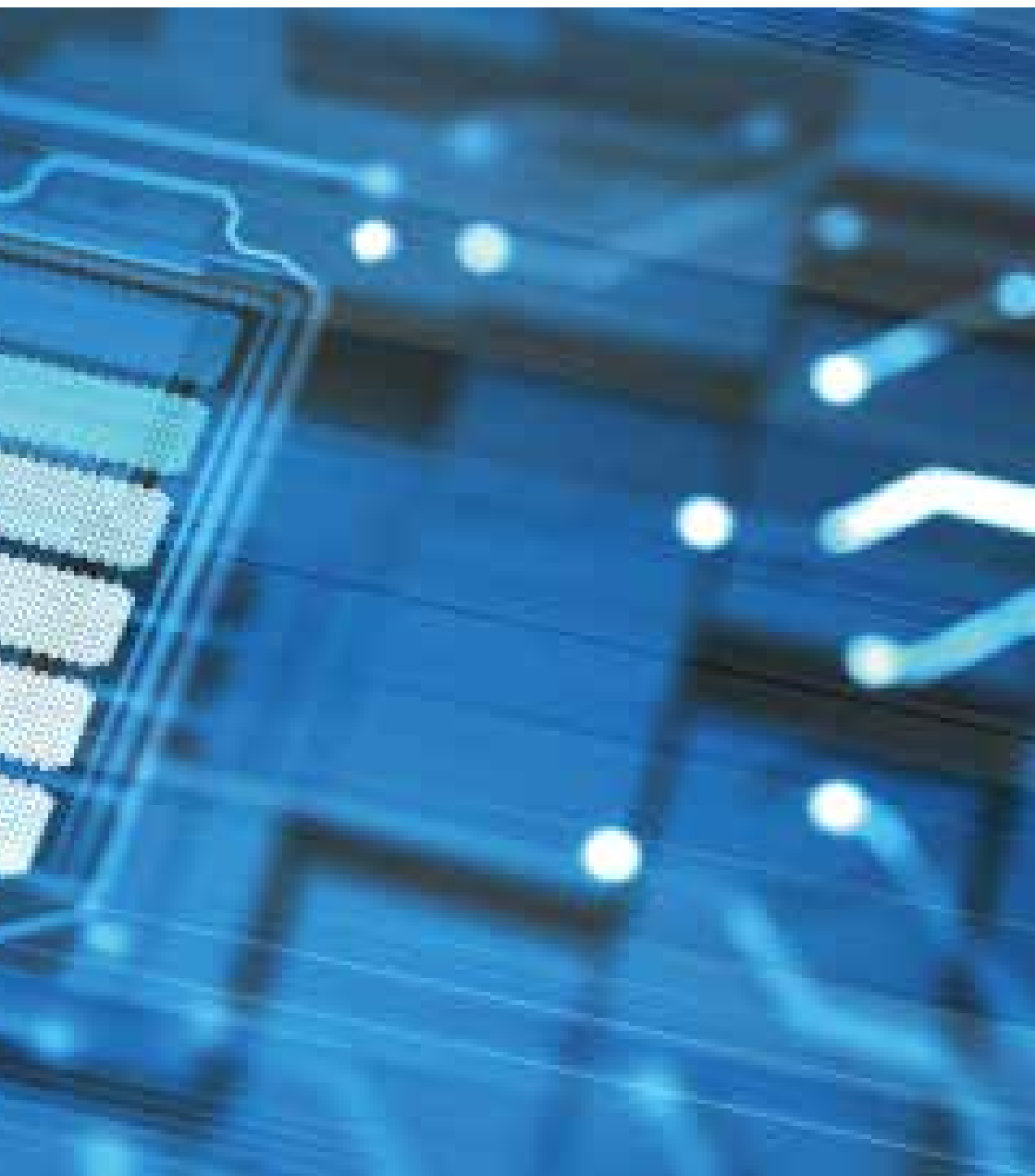


Battery Management



System

Amphenol LTW
Unrivaled Interconnects for Harsh Environments



Products

Numerous electronic products in an EV require venting. Lighting, horns, electronics, powertrain, and other components all experience temperature changes resulting from weather conditions, moisture, or heat from electronic circuits. These temperature fluctuations produce pressure changes inside the components and changes in altitude can also trigger pressure changes. Expanded polytetrafluoroethylene (ePTFE) membranes have proven effective in venting EV enclosures and providing pressure equalization. The range of Vents available from ALTW containing these membranes allows gases to flow in and out of the enclosure but help prevent liquid and particle contaminants from entering.



Stainless



Metal



Snap-In



Plastic



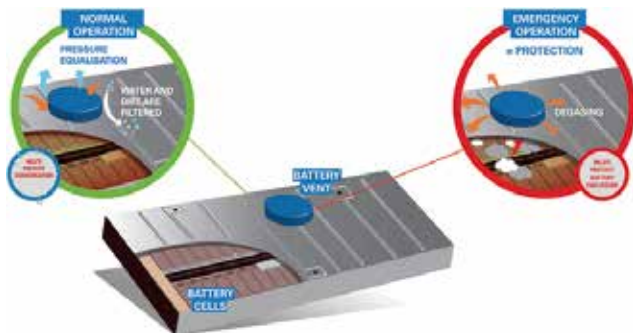
M6 Plastic



Transparent

Protective Vents

- Available in screw thread & snap-in version
- Metal / stainless / plastic version
- Hydrophobic membranes type (water resistant) & oleophobic membranes type (water & oil resistant)
- Air permeability up to 3,000 ml/min @ 70mbar
- Flammability UL 94V-0



Air Ventilation
Calculator



ZConnect® Low-Profile LV214 Compliant Connectors

- LV214 (VW75174) compliant
- Anti-Vibration
- Audible feedback
- Multiple contacts
- FPC, FFC, Wire-to-Board
- Low profile
- Cost and space saving
- Improved assembly efficiency



FPC



FFC



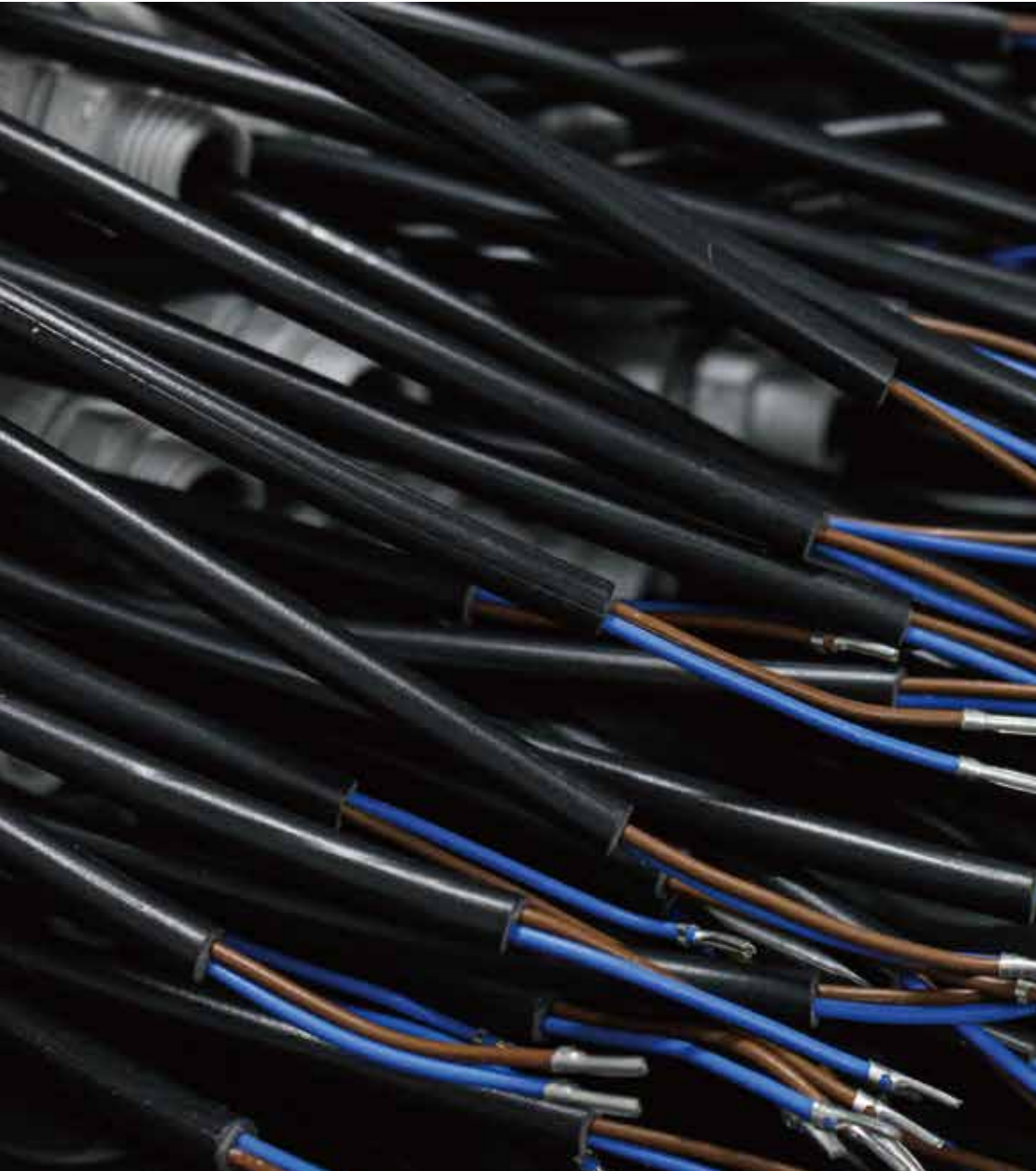
Wire



Though it is low profile (8mm max mated) for space saving it is still robust enough to meet automotive requirements of LV214 (VW75174) ranging from 8 to 40 contacts @1A up to 120V DC available in 0.9 / 1.8 / 2.7mm pitch. Mated and Unmated IPx7 option would be available upon request.

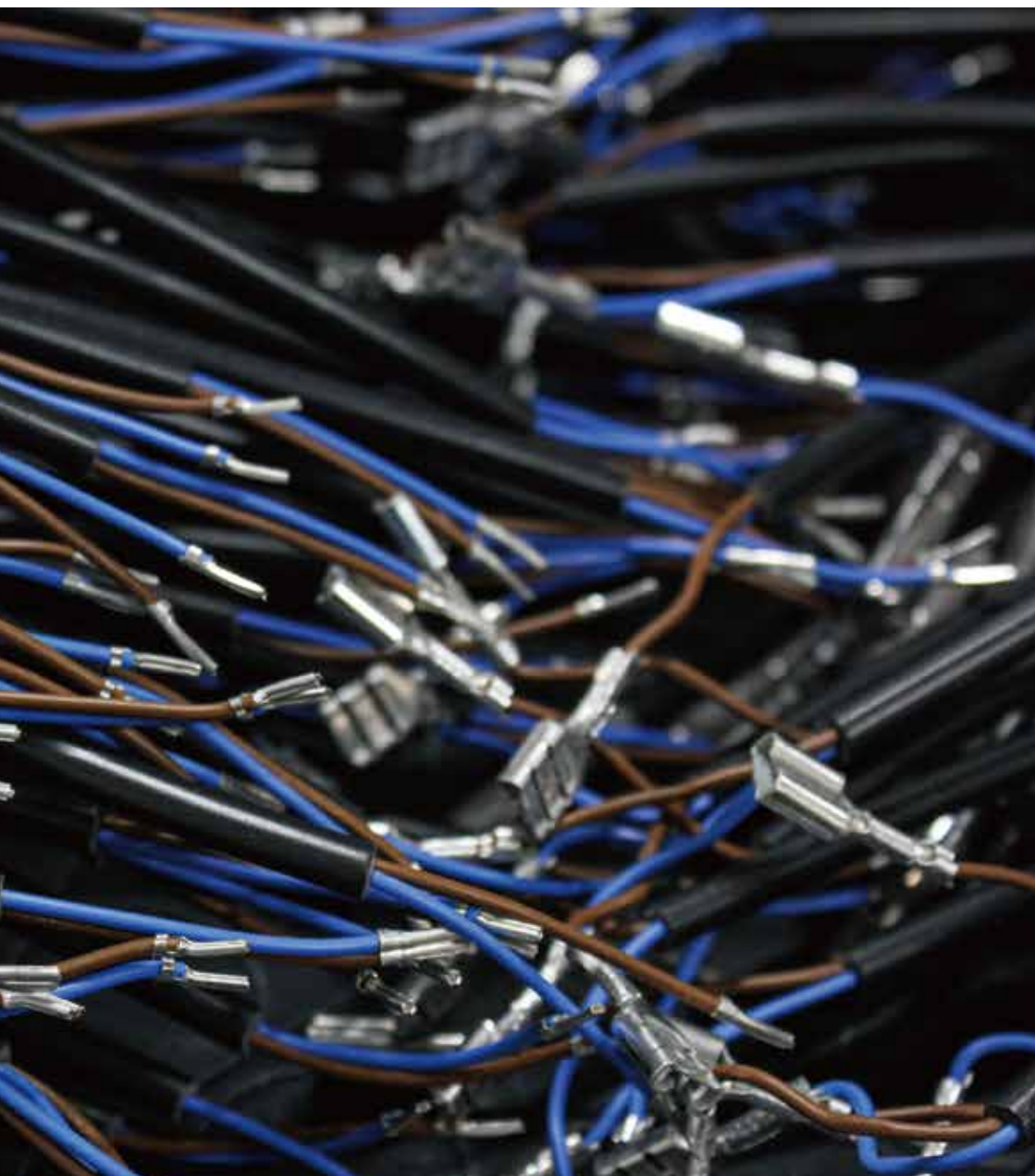


Components/Custom



Solutions

Amphenol LTW[®]
Unrivaled Interconnects for Harsh Environments



Your benefit from an excellent

Amphenol LTW, an innovative interconnection provider, are not only masters in ruggedized connector systems but we also offer a high customization service with optimal engineering evaluation in different form factors.

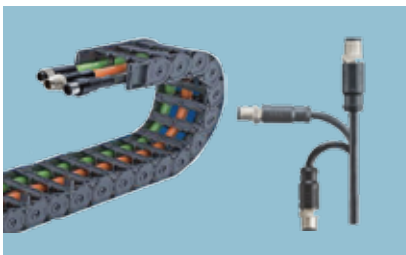
Despite the complex challenges of some connectivity requirements, Amphenol LTW offers flexible tailor-made one stop solutions to meet diverse customer demands and for various applications. Our outstanding capabilities and our customer orientated approach make it possible to provide the right solution with the right quality, performance and investment.



Hybrid (3+8) 50A for motor module



Customer-specific cable assembly for electric vehicle



Highly Flexible Cables



Hybrid (2+4) Flat cable for lighting applications

level of service

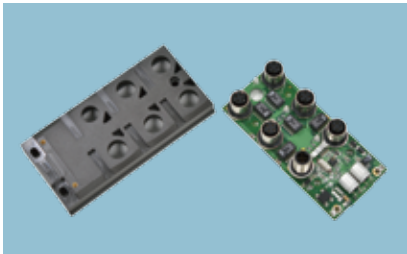
Amphenol LTW
Unrivaled InterConnects for Harsh Environments



Customer-specific cable assembly for E-Scooter control system



Cable assembly for motorcycle DVR



Distribution box



OBD connector for automotive





Contact Us

Luc Kan | Sales & Marketing
Email: luc@ltw-tech.com

Customer Service
Email: sales@ltw-tech.com

Follow Us

